

Project Reference

Asbestos Roof Repair – Crommelin Fibroseal System

Crommelin
Waterproofing & Sealing



Crommelin Media PR201902.1

Project: Sparkle Australasia – Granville, NSW

Product: Crommelin® Fibroseal System

Builder: N/A – Remedial Repairs

Applicator:



Stephen Bain – 02 9674 6741
admin@lrtechnologies.com.au
www.waterproofingplus.com.au

Completion Date: September 2017

Warranty Period: 10 years

Project Scope

To make safe, repair and make water tight damaged and weathered asbestos Super 6 roof installed circa 1960.

To install a full asbestos roof encapsulation system with a 10 year system product warranty period.

Products Specified

Crommelin® Fibroseal Primer

Fibroseal Primer is a premium penetrating treatment for weathered asbestos sheeting.

Fibroseal Primer soaks through lichen and degraded asbestos, down to sound base material, binding these unstable elements.

Crommelin® Fibroseal Topcoat

Fibroseal Topcoat is a highly durable high build acrylic coating, specifically engineered for application over Fibroseal Primer.

Fibroseal Topcoat contains active ingredients that resist moss and lichen growth and the application of Fibroseal Topcoat delivers a significant reduction in roof cavity temperature and associated energy costs.

The application of the Crommelin® Fibroseal system not only provides a quick and economical alternative to asbestos roof removal and replacement, but also delivers a rejuvenated roof appearance.



Project Specification – continued.

Hole repair surface preparation

Repair area kept wet with water, whilst any pieces of loose material were removed and disposed of in accordance with statutory guidelines. Repair area allowed to thoroughly dry.

Fibroseal Primer applied to area around hole repairs, as per TDS and allowed to dry.

Hole repair

Pre-shaped lead sheeting bonded over repair site with a flexible polyurethane sealant and allowed to cure.

Full roof encapsulation priming

Project Reference

Asbestos Roof Repair – Crommelin Fibroseal System

Crommelin Media PR201902.1

Project Specification - All products applied as per technical data sheet, available at crommelin.com.au. Free call 7 days 1800 655

Risk assessment

Determine roof condition as per statutory guidelines. Roof determined to be of a reasonable condition and suitable for repair and encapsulation.

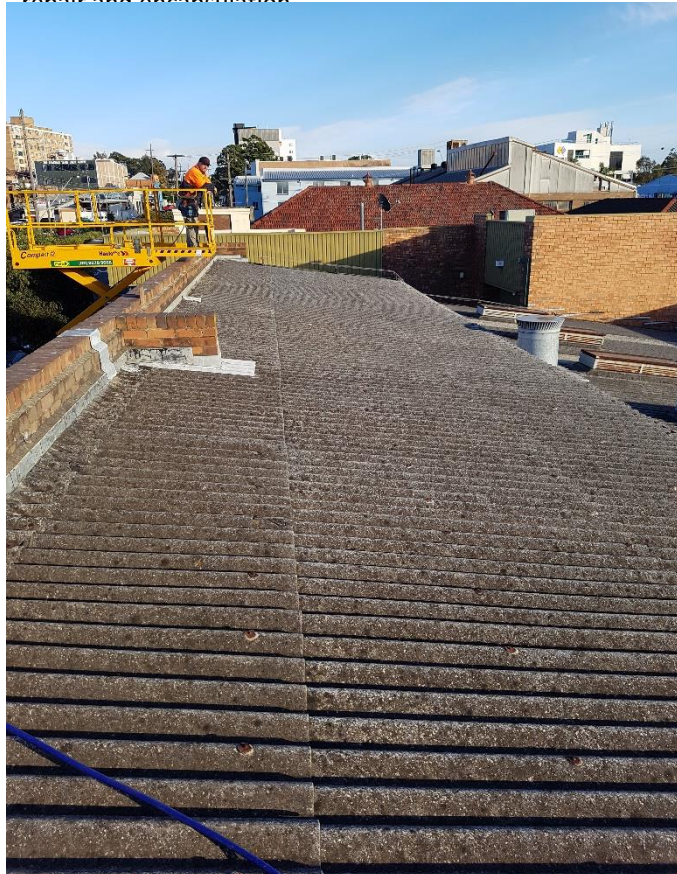


Fig 1.0 Roof Inspection

Fibroseal primer applied to full roof area as per TDS and allowed to dry.

Full roof encapsulation topcoat

2 coats of Fibroseal topcoat applied as per TDS. Polyfab reinforcing fabric wet embedded into coat 1 across all areas of repair.



Fig 1.1 Roof prior to treatment



Project Reference

Asbestos Roof Repair – Crommelin Fibroseal System

Crommelin Media PR201902.1

Fig 1.2 Hole / Crack Repair

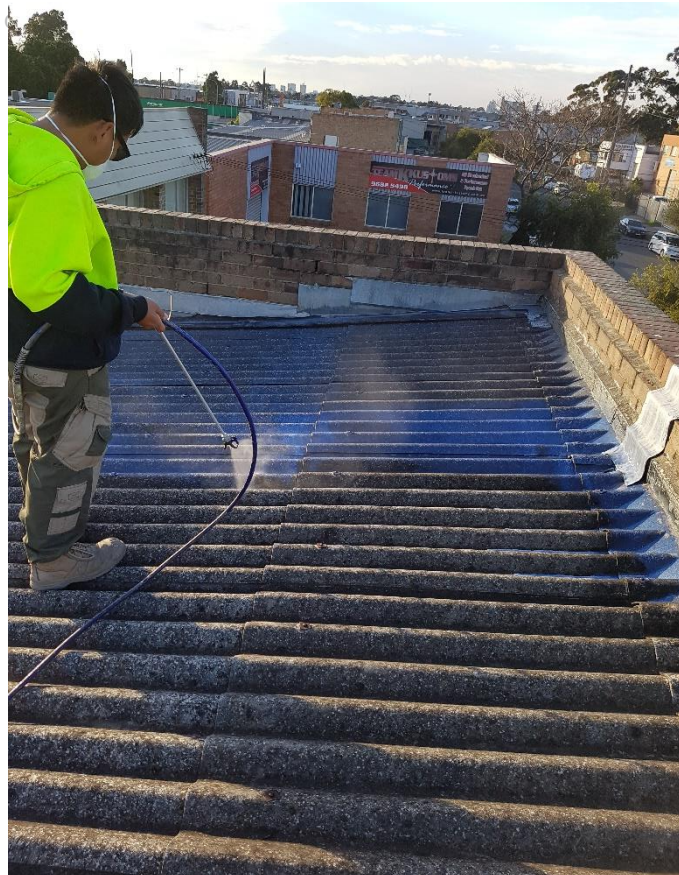


Fig 1.4 Fibroseal Primer Application

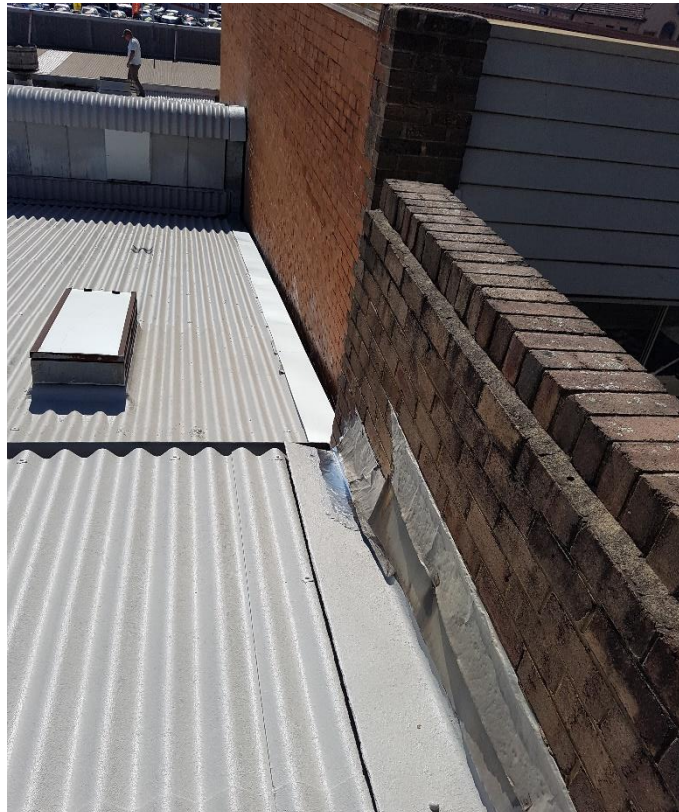


Fig 1.3 Hole / Crack Repair

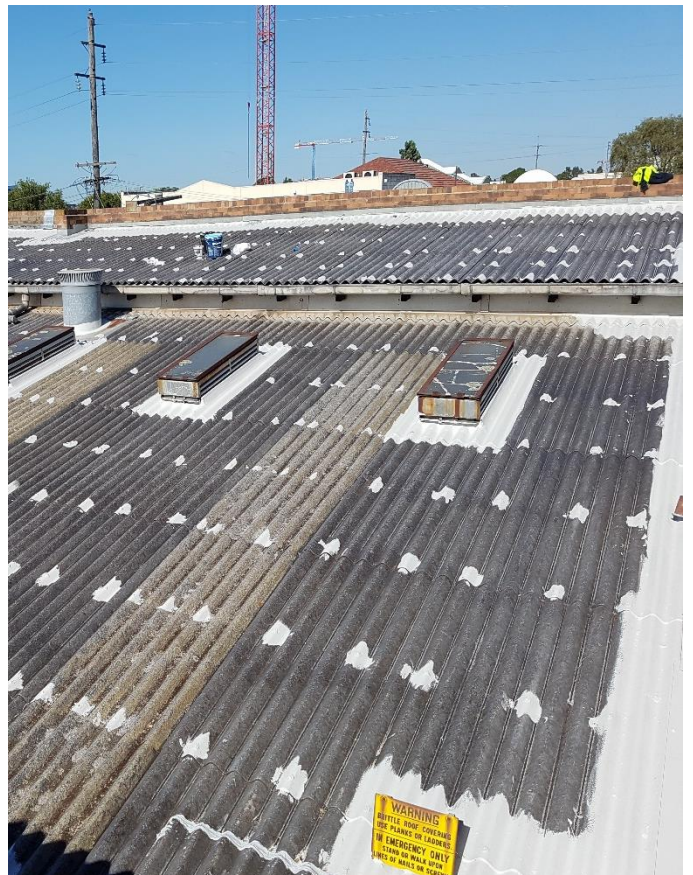
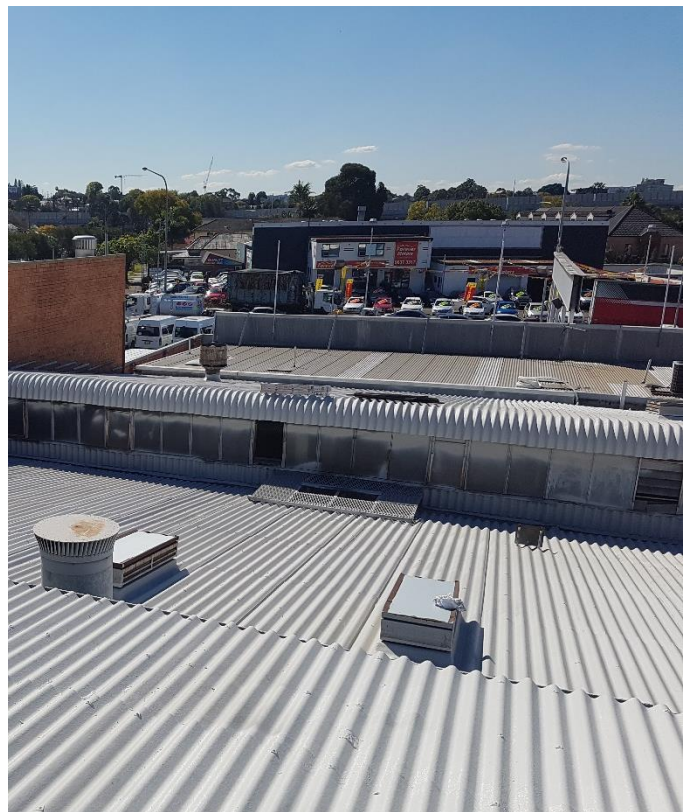


Fig 1.5 Fibroseal Topcoat Preparation - All screw fixing, joints and joints



Project Reference

Asbestos Roof Repair – Crommelin Fibroseal System

Crommelin Media PR201902.1

Fig 2.1 Fibroseal Topcoat – Coat 1

Fig 2.2 Fibroseal Topcoat – Coat 2



Fig 2.3 Completed Crommelin® Fibroseal System – Roof Back In service with 10 Year Warranty

For more details, project specifications or information, please contact your local Crommelin® representative on:

Tel: 1800 655 711

Email: service@crommelin.com.au

Project Reference

Asbestos Roof Repair – Crommelin Fibroseal System



Crommelin Media PR201902.1

Crommelin® and other marks followed by ® are registered trademarks. Marks followed by the symbol of ™ are trademarks. Any advice, recommendation, information, assistance or service provided by Crommelin® in relation to its products or their use is given in good faith, however is provided without responsibility or liability.

Customers need to undertake their own assessment to determine the suitability of a product for the particular use intended. As the performance of any product is subject to a wide variety of different surface types as well as environmental and surface-specific conditions, it is essential that a sample of the product be applied to the intended area of use to ensure it is acceptable in appearance and finish and that it performs as required on the specific surface.

Crommelin® also reserves the right to update information without prior notice, to reflect ongoing research and product development.
